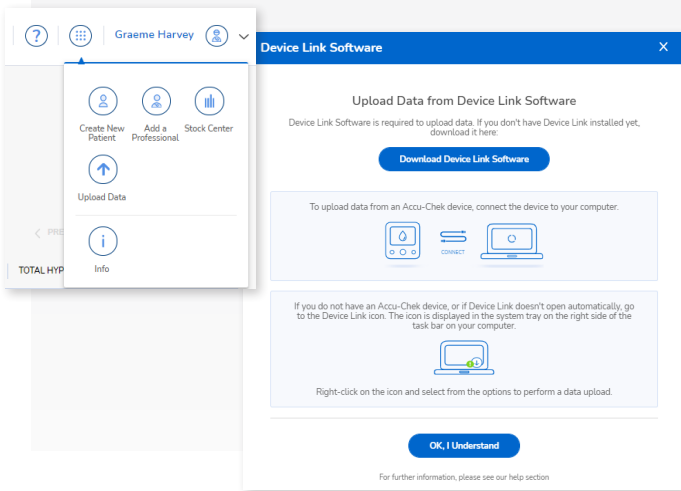


Installing Device Link on Windows



1



Download Device Link software

Accessing data via USB download starts here.

First, sign in to your RocheDiabetes Care Platform account.

Then click on the and select .

In the pop-up, click **Download Device Link Software**.

Follow installation steps based on your operating system.

2

Install Device Link software—Windows

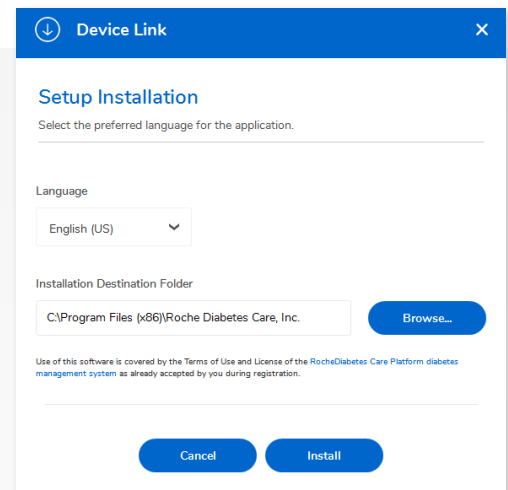
Install must be done by a user with admin rights.

1. Double-click the **downloaded installation file** (Setup.exe)

NOTE: If the file is not visible on your computer screen, check for the file where your system stores downloaded files. Usually a file called “downloads”.

2. If needed, select the language and change the installation destination folder.

3. Click **Install**.



3

Select installation mode

Hospital / Practice module

Patient mode (single user)

Ok



Device Link



Installation Complete



Device Link has successfully been installed. Device Link will be started once setup exits.

Click "Finish" to exit.

Finish

Select installation mode

Hospital/Practice Mode is the required mode for the HCP. The base installation includes a default set of device drivers.

After this, the setup wizard allows an IT administrator to install drivers for additional compatible devices*

**Watch on screen instructions carefully as Device Link installs. It is recommended that when you are asked to reboot the system, you select "no" and reboot the computer after Device Link is fully installed.*

**Selecting a large number of device drivers may increase installation time and effort.*

Patient Mode allows your patients to download devices from their home computers.

Finish installation

A message notifies you when the installation is complete.

Click **Finish** to exit.

For additional information log into your HCP Account and click the  on the main menu bar.

Roche Diabetes Care is aware the platform may need to undergo a Data Privacy Impact Assessment. Please contact your Roche Sales Representative if you would like assistance during this process.

ACCU-CHEK, ROCHE DIABETES CARE, and ROCHEDIABETES CARE PLATFORM are trademarks of Roche. All other product names and trademarks are the property of their respective owners. © 2021 Roche. 348-56685E-0321



Want more information?

diabetescareplatform.com | 1-800-628-3346

Or work with your sales rep directly.