

RESULTS FROM A MARKET RESEARCH INVESTIGATION



The Accu-Chek Instant meter is easy to use for self monitoring of blood glucose from a healthcare professional and patient perspective

Incorporating routine testing into busy lifestyles can be a challenge for people with diabetes. The Accu-Chek Instant meter is designed to reduce this burden by providing features to address steps of the monitoring process, to help make every day blood glucose monitoring easy.

Quick Facts

Methods

A structured web-based questionnaire was designed exclusively for the investigation. A 5-point rating scale with “disagree strongly” being the negative side of the scale and “agree strongly” being the positive side. Before starting the interviews, a short training video was shown to give an overview of the meter and how to use it. After seeing the video HCPs and patients were asked questions about specific meter features.

Countries

Germany, UK, India, Mexico and UAE.

304 interviews in total were conducted

- 153 HCPs with a range of 2-40 years in diabetes practice. HCPs were defined as general practitioners (GPs)/ primary care providers (PCPs), diabetic nurse educators or diabetes coaches/nurses who recommend any BGM use in their routine work with type 2 diabetes patients.
- 151 patients with type 2 diabetes who use a BGM from 1 to 2 times a week up to 5 or more times a day and are 55+ years old.

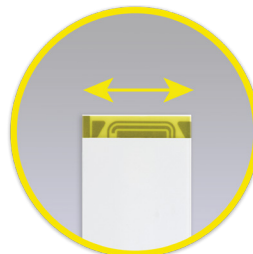
Results

An overwhelming majority of HCPs and patients found the Accu-Chek Instant meter as easy to apply blood, easy to read and understand the blood glucose values, easy to eject test strips hygienically and easy to learn on their own without training. As a result the majority of HCPs were willing to recommend the device to patients. In addition, the majority of HCPs and patients asked agree that patients can learn to use the meter on their own without training.

	HCP*	Patient**
Backlit display makes it easy to read the screen	93%	94%
Colour scale makes it easy to understand the results quickly	90%	93%
The wide dosing area will make it easy to apply the blood at the end of the strip	93%	94%
Test strip ejector makes it easy to remove the strip hygienically	91%	93%
I believe I/my patient could easily learn how to use this meter on their own without training	83%	96%

*% of HCPs that agree or strongly agree

**% of patients that agree or strongly agree



Order supplies of Accu-Chek Instant meters

Online: diabetes.roche.com/hcp-gb/order-supplies

Phone: 0800 040 7221 (UK) 1 800 931078 (ROI)

¹ Market research in 5 markets with 151 patients and 153 healthcare professionals. Roche Diabetes Care Whitepaper: The Accu-Chek® Instant meter is easy to use for SMBG from a healthcare professional and patient perspective; Results of a web-based online market research in 5 markets with 151 patients and 153 Healthcare Professionals. 22-July-2021. (Authors: Sigrid-Patricia Roehr, Julia Roetschke, Carola Niklaus).

© 2022 Roche Diabetes Care Limited. All rights reserved.

ACCU-CHEK and ACCU-CHEK INSTANT are trademarks of Roche. | Roche Diabetes Care Limited, Charles Avenue, Burgess Hill, West Sussex, RH15 9RY, UK. | Company Registration Number: 09055599. Date of preparation: October 2022 | BGM2022-UK&I-398 | For healthcare professional use only in the UK and Ireland. Not for distribution. | diabetes.roche.com/hcp-gb