

SIMPLY CLEAR



Easy-to-read results

Clearly see results on a large, backlit display

Understand at a glance

The target range indicator provides an instant view to see if your result is high, low, or in-range

Clean strip disposal

A strip ejector for quick, hygienic removal



Test strip

Testing principle

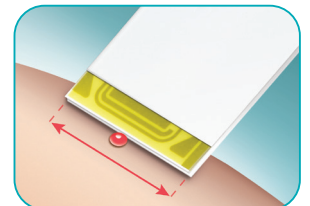
Electrochemical testing method using FAD-GDH

System performance

- Test time: *less than 4 sec*
Sample size: *0.6 microliter*
Accuracy: *Fulfills ISO 15197:2013/EN ISO 15197:2015 and delivers even tighter 10/10 accuracy¹*
- Blood samples: *capillary, arterial, venous and neonate blood*
- Hematocrit range: *10–65%*
- No oxygen interference: *enzyme is not susceptible to oxygen*

Easy-edge test strip

- A small drop of blood can be dosed anywhere along the yellow edge
- Fast, easy fill strip – results in less than 4 seconds
- Wide blood application area compared to leading brands



Ensure you ONLY use a lancing device which is approved for Professional Use. Refer to your facility's infection control procedures; and hygiene and safety policy.

THE ACCU-CHEK INSTANT SYSTEM

Testing in clinical settings

**HYGIENE
MATTERS**

safe from patient to patient



Start safe



1. Wear protective gloves.

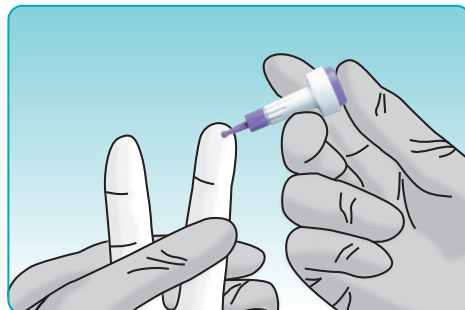


2. The patient's hands should be washed with warm water and soap and then dried well.

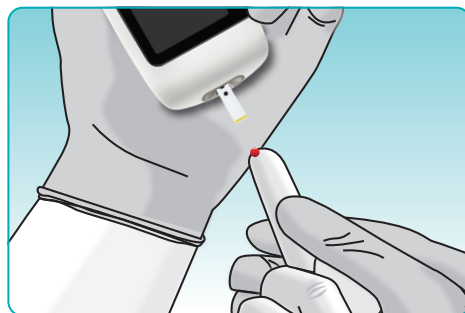


3. To turn on the meter insert the test strip into the meter. When the blood drop symbol flashes, you can perform a test.

Test safe




4. Lance the side of the fingertip with the single-use lancing device approved for professional use.



5. Touch the blood drop to the yellow edge of the test strip.



6. Remove finger from the test strip when the flashing hourglass symbol  appears. The test result appears on the display in less than 4 seconds.

Finish safe



7. After a successful test, the meter turns off 15 seconds after the test strip is removed. Dispose of the used test strip in accordance with your facility's disposal regulations.



8. Dispose of the used single-use lancing device in accordance with your facility's disposal regulations.



9. To disinfect, gently wipe the meter's surface with a soft cloth slightly dampened (wring out any excess liquid) with 70% isopropyl alcohol. Make sure the surface stays wet for at least 2 minutes.

For more details on the devices, please refer to the user instructions of your blood glucose monitoring system.

1. Breitenbeck N, Brown, A: Assessment of a Blood Glucose Monitoring System for Self-Testing with Three Test Strip Lots following ISO 15197:2013/EN ISO 15197:2015 J Diabetes Sci Technol. 2017

www.diabetes.roche.com/hcp-gb

© 2023 Roche Diabetes Care Limited. All rights reserved. | ACCU-CHEK and ACCU-CHEK INSTANT are trademarks of Roche. | All other trademarks are the property of their respective owners. | Roche Diabetes Care Limited, Charles Avenue, Burgess Hill, RH159RY, UK. | Company registration number: 9055599. | For Healthcare Professional use only in the UK. Not for distribution. | BGM2023 - UK&I-567 | Date of Preparation: March 2023 <https://diabetes.roche.com/hcp-gb/>